

THE NEIGHBOURHOOD GUIDE



WATERLOO

BALANCE AND HARMONY

P.10
A SCENE TO SAVOUR

The Danks Street dining scene itself has become the stuff of Sydney legend.

P.16
A NATURAL STATE

In Waterloo, you're never far away from beautiful natural spaces.

P.20
INNER-CITY ADVENTURES

Waterloo puts you at the heart of Sydney's main action and events.

VISIT [CROWNGROUP.COM.AU/MASTERY](https://crowngroup.com.au/mastery) OR CALL US ON 1800 895 610

IN THIS ISSUE

PART ONE

WELCOME TO *Waterloo*

07

Come to know the suburb's past and future.

08

Familiarise yourself with the features of Waterloo.



PART TWO

A SCENE *to Savour*



12

Explore stylish bars, fine dining and local cafés.

16

Forego the concrete jungle for lush parklands.

20

Discover exciting times around the corner.

PART THREE

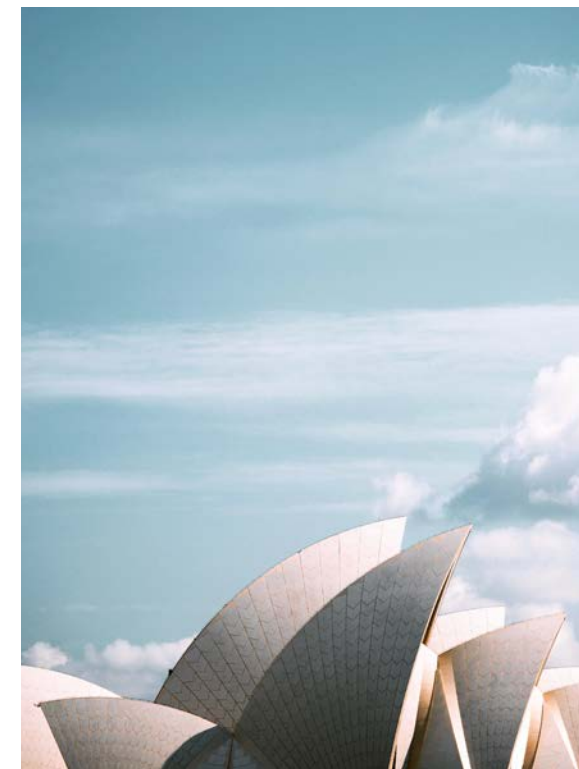
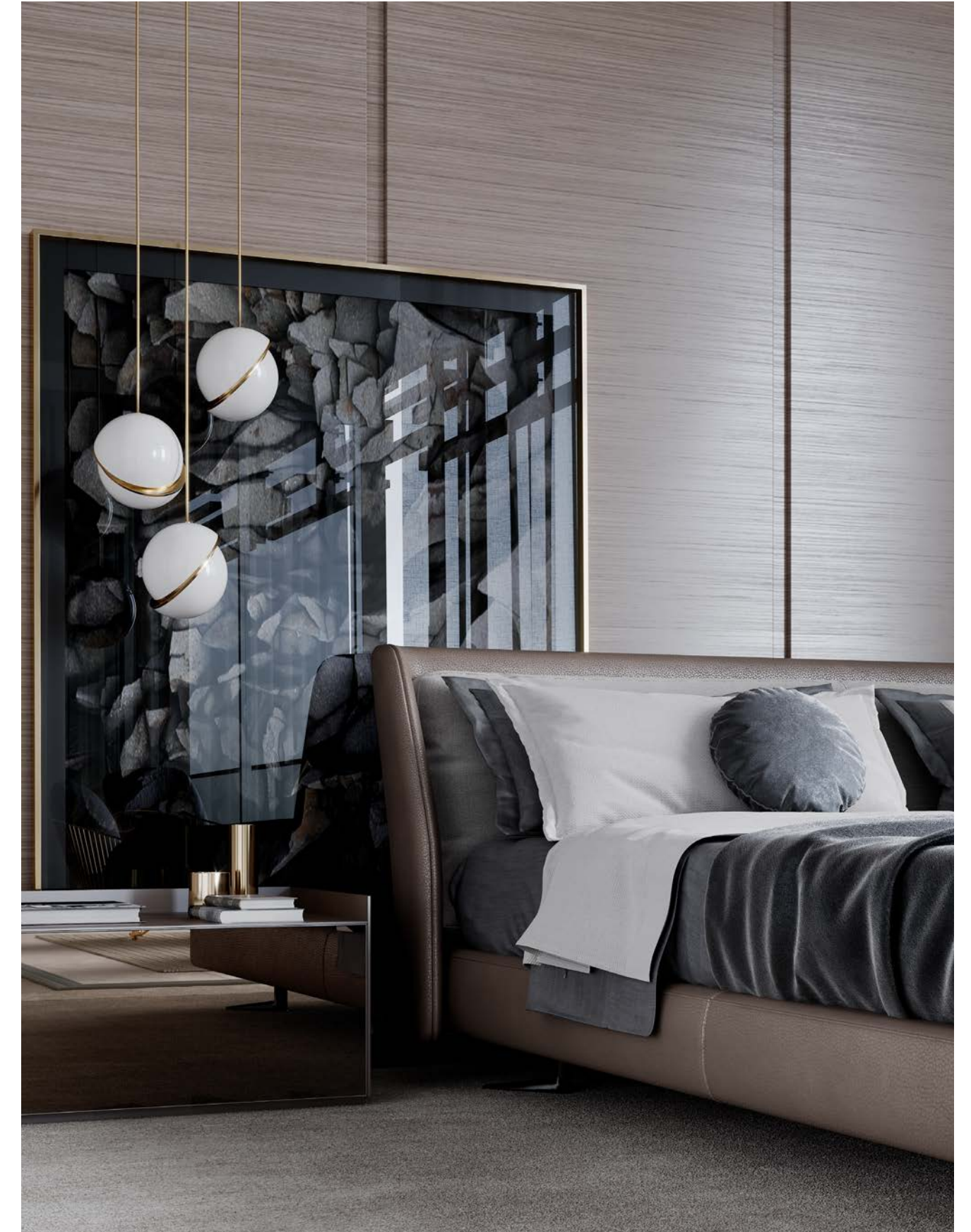
A FRESH LOOK *at Urban Living*

24

Embrace the modern Australian lifestyle.

26

Six reasons to buy in Waterloo.



PART FOUR

FIND YOUR *Opportunity*

28

Own your own masterpiece.



MASTERY BY CROWN GROUP

WELCOME TO WATERLOO

*Whether you're visiting or planning
to move into the area, you're bound to
fall in love with the evolving spirit and
creative energy of Waterloo.*





MASTERY BY CROWN GROUP
IS PERFECTLY SITUATED JUST
4KM FROM SYDNEY CBD.
BOTTOM IMAGE: ALI YAH

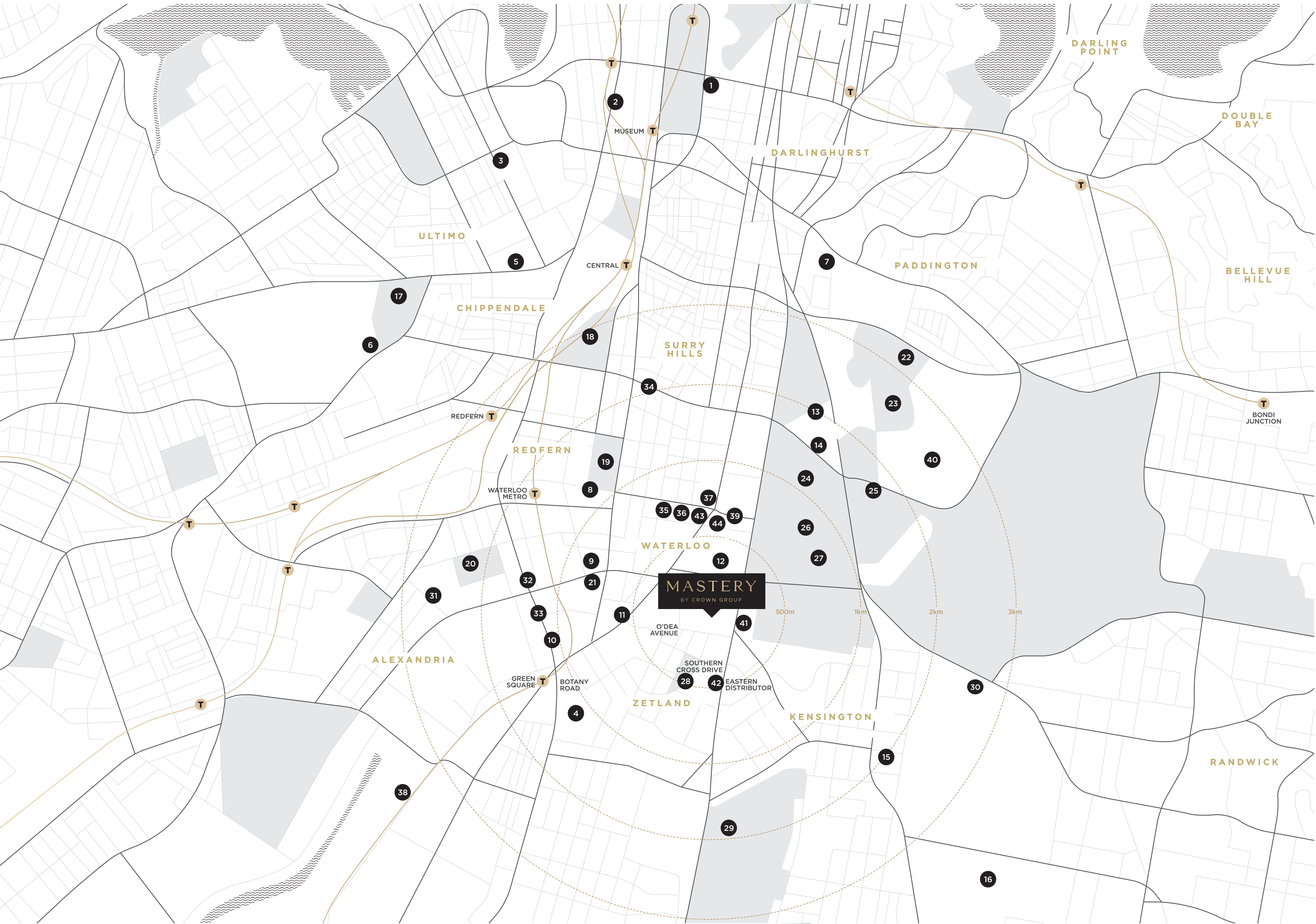
*Waterloo, located just four kilometres south of
Sydney's CBD, is a captivating place to visit
and reside in.*

This neighbourhood was once home to industrial factories and warehouses, including the manufacturer of the iconic Australian Akubra hat. Victorian terrace homes now sit aside reimagined warehouses and stylish apartments, just a stone's throw from the natural playgrounds of Centennial Parklands and Sydney Harbour. There are endless dining and retail destinations to explore, and from here it's as easy to get to the beach as it is to take off from the airport.

The City of Sydney has noted the potential in this flourishing area and has been busy investing in nearby Green Square (Sydney's first new town centre in a century), as well as the creation of the Lachlan Precinct which promises new shady spots and shared community spaces. The future Sydney Light Rail and Sydney Metro will further complement the already excellent public transport systems in the area.

We're delighted to introduce you to its most beloved features and to share in the excitement for this unique inner-city neighbourhood.





CONVENIENCE AT YOUR DOORSTEP

*Familiarise yourself with
the features of Waterloo*

RECREATION

1. Australian Museum
2. The Metro Theatre
3. Powerhouse Museum
4. Green Square Library & Civic Plaza

EDUCATION

5. University Of Technology Sydney
6. The University Of Sydney
7. The University Of New South Wales Art & Design
8. Ku James Cahill Preschool
9. Our Lady Of Mt Carmel Catholic Primary School
10. Green Square School
11. Taylors College
12. Moore Park Children's Early Learning Centre
13. Sydney Boys High School
14. Sydney Girls High School
15. Kensington Public School
16. The University Of New South Wales

PARKS & SPORTS CENTRE

17. Victoria Park
18. Prince Alfred Park
19. Redfern Park
20. Alexandria Park
21. Waterloo Oval
22. Allianz Stadium
23. Sydney Cricket & Sports Ground Trust
24. Moore Park Tennis
25. Centennial Parklands Sports Centre
26. Moore Park
27. Moore Park Golf
28. Joynton Park
29. The Australian Golf Club
30. Royal Randwick Racecourse

DINING

31. Bread & Circus Wholefoods Canteen
32. John Smith Specialty Coffee
33. The Sweet Spot Waterloo
34. Nourishing Quarter
35. Luke's Kitchen
36. So 9
37. Kepos Street Kitchen
38. The Grounds Of Alexandria

RETAIL

39. Danks St Plaza
40. The Entertainment Quarter
41. Supa Centa Moore Park
42. East Village Shopping Centre
43. Aldi
44. Coles

A SCENE

To find a world of flavour in Waterloo you only need to make your way to Danks Street, which has long been a Sydney dining destination in its own right.

TO

Kepos & Co offers modern Israeli fare and So 9 serves up-market Vietnamese street food flavours, while across the road Sonoma Café dishes out gourmet pastries and exceptional coffee.

SAVOUR

In fact, the whole of Waterloo is a foodie heaven.



PAPERBARK, SITUATED ON DANKS STREET OFFERS RELAXED ELEGANT DINING. IMAGE CREDITS: CONDE NAST TRAVELLER, TOM GRIMBET, VITCHAKORN KOONYOSYING, TYLER NIX AND DAN GOLD.



DINE

Every taste is covered, from Nordic nosh to vegan delights.

KEPOS & CO.

Award-winning chef Michael Rantissi brings us a local partner to Redfern's Kepos Street Kitchen in the garden courtyard of the Casba building on Danks Street. Seasonal produce is transformed into a range of Israeli and Middle Eastern delights with a deft hand and the use of a wood-fired oven. Be sure to try the kingfish ceviche with radish sprouts, and the delicious roasted baby carrots with cumin, honey and feta. Kepos & Co. is open every day except Monday and offers an extensive wine, beer and cocktails list.

Shop 5, 18 Danks Street, Waterloo

Contact (02) 9690 0931

keposandco.com.au

PAPERBARK

Plants are the hero at Paperbark, where you can sample some of the best vegan fare in Sydney and beyond. Walk through to the Phillip Street entrance of the Casba complex and embrace the mystery of the menu, because you can't really go wrong. We love the elegant delicacy of the skewered mushrooms served with macadamia cream and finger lime. Native Australian ingredients are celebrated here too, including salt bush, wattleseed and lemon aspen. Paperbark is open from 6pm to late every day except Tuesday and Sunday.

8/18 Danks Street, Waterloo

Contact (02) 9310 1356

paperbarkrestaurant.com

BABY COFFEE CO.

Baby Coffee Co. is one of the many hip new eateries popping up throughout Waterloo, and it has quickly become a go-to place for brunch. Kick-start a girls' get-together with an egg and pork belly roll, or an espresso panna cotta served with fresh fruit. The dishes come from the kitchen looking so aesthetically appealing you'll be itching to take a photo. Dinner is just as delicious, with cocktails, gorgonzola gnocchi and crab spaghetti on the menu. Open for brunch Wednesday to Sunday and dinner Thursday to Saturday, and your canine friends are welcome.

Shop 1, 810 Elizabeth Street, Waterloo

Contact 0468 462 229

babycoffeeco.com.au



MJØLNER

Named after the hammer of the Norse god Thor, Mjølner offers something truly unique in Sydney's inner city. The restaurant's menu centres around a Viking theme and serves up appropriately robust dishes along with an inspired range of cocktails and over 400 whiskies from around the world. Bring your battle-worthy hunger and indulge in a large cured meat board or a charred octopus tentacle in the rustic rune-strewn surroundings. Open Monday to Sunday, this is the perfect place for a late-night feed or a mid-week gathering with friends.

267 Cleveland Street, Redfern

Contact (02) 8646 4930

mjolner.com.au/sydney

SANPO JAPANESE RESTAURANT

Fresh is the word at Sanpo Japanese Restaurant, a local favourite for authentic sushi and hot pot dishes. The team here sources the best seafood available in the city, ranging from fresh Tasmanian sea urchins to tuna sashimi direct from Sydney Fish Markets. We can't resist dropping in for a serving of seared kingfish Nigiri sushi and a wagyu beef shabu shabu hot pot from time to time. Sanpo is open every day except Monday for dinner so you can treat yourself after work, and for lunch between Wednesday and Sunday.

304/5-9 Rothschild Avenue, Rosebery

Contact (02) 8541 5867

sanporestaurant.com.au

ESTER RESTAURANT

Save a visit to Ester for a special occasion, because it's an experience you won't forget in a hurry. Billy Kwong and Rockpool veteran Mat Lindsay serves up a selection of intriguing small plates that are infused with wood-fired flavours in this stripped-back space. Treat yourself to a famously flavourful hanger steak and sugarloaf cabbage with fermented onion and sesame, paired with a boutique wine from the carefully curated list. Reservations are recommended at Ester, for lunch on weekends and dinner Monday to Saturday.

46-52 Meagher Street, Chippendale

Contact (02) 8068 8279

ester-restaurant.com.au



WHAT THE LOCALS SAY

"Waterloo's vibrant food-and-arts precinct is a master of reinvention."

The Danks Street dining scene itself has become the stuff of Sydney legend. Jared Ingersoll – who has just opened Butcher and Farmer at Harold Park Tramsheds – opened Danks Street Depot in 2002, before the original Fratelli Fresh opened across the road in a vast old warehouse one year later. While both institutions are now gone, Danks Street is a master of reinvention. Old favourites such as Sonoma Bakery and Wah Wah Lounge remain, while newer neighbours include contemporary Vietnamese street-food eatery SO9 and Middle Eastern-inspired Kepos & Co. They attract customers from the local community as well as those who travel from far and wide to this Danks Street destination.

"Danks Street is an absolute buzz," says chef and restaurateur Luke Mangan, whose global headquarters you'll find there alongside his namesake restaurant, Luke's Kitchen. Close to the city and a stone's throw from other cool suburbs such as Redfern and Alexandria, it's a great place to be located, says Mangan: "A complete, eclectic mix of restaurants, food, design, new development and style. Love it!"

Danks Street, you're doing it again.

WORDS COURTESY OF IMOGEN EVESON - BROADSHEET MEDIA



IMAGE CREDITS: STANDFORD
SMITH AND ADAM JAIME

IMBIBE

Sip in style at Waterloo's finest bars and watering holes.

NO. 5 RESTAURANT AND BAR

Once home to a gem-polishing workshop, number 5 McCauley Street is now home to one of the slickest bars in inner Sydney with an ultimate goal of being zero-waste. Sophisticated without being stuck-up, No. 5 serves up perfectly balanced cocktails and carefully chosen wines from Europe, New Zealand and our very own backyard. Anyone for a Smoke Break, with applewood-smoked lardo-infused bourbon, ginger sugar and Angostura bitters? Drop in from Wednesday to Sunday to sample the extensive drinks list and an innovative seasonal menu.

5 McCauley Street, Alexandria
Contact (02) 8377 1030
restaurant5.com.au

THE VILLAGE CROWN

The Village Crown is exactly the type of establishment you'd want just down the road, with weekly specials and generous modern pub meals. Take a seat in the lively outdoor seating area and choose from seasonal cocktails featuring flavours like apple, blood orange and even gummy bears. If aperitifs aren't your style, there

are also plenty of spirits, wines and beers on tap. Swing by from 12pm to late, seven days a week, and check out the live music and trivia nights. Best of all – it's just a five-minute walk home at the end of the evening.

10/2-4 Defries Avenue, Zetland
Contact (02) 9662 8216
villagecrown.com.au

THE CAULIFLOWER HOTEL

This bustling pub makes an ideal local in Waterloo for drinking, dining and catching up on Friday nights. Friendly faces serve up juicy burgers with a wide range of wines, beers and cocktails (we can recommend the zesty Jungle Bird) to the sound of regular live music. Expect weekly specials, events and social nights in a fun and laid back atmosphere. Upstairs you'll find the Forgotten Cask, a rum cocktail bar with a Caribbean vibe that's ideal for birthday functions. The Cauliflower Hotel is open every day of the week from 10am until late.

123 Botany Road, Waterloo
Contact (02) 9698 3024
cauliflowerhotel.com.au





IN IT'S NATURAL STATE

Breathe deep in Centennial Parklands: the green lungs of Sydney.

An inner-city suburb can often conjure images of a concrete jungle, but nothing could be further from the truth when the urban oasis of Centennial Parklands is less than a 10-minute walk away. This remarkable green sanctuary sprawls over 360 hectares including Moore Park, Centennial Park, and Queen's Park, providing a safe haven for hundreds of species of native birds and wildlife. Brushtail possums, water birds, bats and the shy Sydney basin turtle – they all call Centennial Parklands home, as do over 16,000 trees.

Even with daily visits you may never run out of pathways to explore in the parklands, between the low-lying wetlands, the native forests, freshwater ponds and swathes of green spaces to run and relax. Over 750,000 cyclists roll along the pathways every year, while others prefer a spot of tennis, soccer or netball at the Centennial Parklands Sports Centre. There's also one of the world's few opportunities to ride a pony or horse in inner city parklands, thanks to the Centennial Parklands Equestrian Centre.

Children nurture their inner wild things at the internationally acclaimed Ian Potter Children's WILD PLAY Garden, where little ones can conquer the treehouse, zip down slides, peek through the bamboo forest and clamber through dry creek beds. At over 6,000 square metres in size, this area has officially been declared the best kid's play space in the entire country.

As evening falls, there's the option of joining the rangers for a spotlight walk to watch microbats, flying foxes, possums and tawny frogmouths navigating their nocturnal world – or, to wander to Belvedere Amphitheatre to catch a film at the park's Moonlight Cinema.

In Waterloo, you're never far away from beautiful natural space. There's the Waterloo Park Playground, the Mary O'Brien Reserve, Raleigh Park and Joynton Park. Stay tuned for the revitalised Lachlan Precinct, as its three new public parks will provide verdant spaces for the community to gather. If that wasn't enough, it's also possible to be swimming at spectacular Coogee Beach in under 20 minutes.



"The new Gunyama Park Aquatic and Recreation Centre will be Sydney's largest new aquatic development since the 2000 Sydney Olympics."



HELLO, SPORT!

Get some soccer practice in or attend a spectator event. Sports lovers are truly spoilt for choice in Waterloo. Will you try your hand at horse riding or soccer at Centennial Parklands? Perhaps you'll choose to hone your athletic ability with open training nights at the E.S. Marks Athletics Field. Or, perhaps you prefer to join your local team with Saturday morning rugby at Waterloo Oval. If you prefer to sweat solo you have the endless pathways of Moore Park to explore, as well as Prince Alfred Park Public Pool if you like to put in a few laps after work. The new Gunyama Park Aquatic and Recreation Centre is set to open in 2020 just by East Village Shopping Centre, and will be Sydney's largest new aquatic development since the 2000 Sydney Olympics.

When it comes to witnessing world-class events you're also in for a treat. Waterloo residents are within walking distance of Royal Randwick Racecourse, home to the world's richest 200 metre turf race and the richest turf race overall: the \$13 million TAB Everest.

A stroll through Moore Park will bring you to games at Sydney Cricket Ground, including Test, One Day International and Twenty20 cricket, as well as AFL, rugby league and rugby union games. When the revitalised Sydney Football Stadium is completed in 2022 it will provide another state-of-the-art 40,000-seat venue for local and international sporting events.

ABOVE PAR

Green and experienced golfers will love the area's extensive courses. Waterloo simply couldn't place you better for regular golf practice. Within a few moments you have Moore Park Golf Course, a public golf course featuring an 18 hole championship course as well as shorter alternatives. The modern driving range here is the ideal place to hone your techniques and let off some steam after a week of work. You can also book in personal golf lessons here with PGA-accredited coaches, seven days a week. Meanwhile in nearby Rosebery, The Australian Golf Club provides an exclusive private course which has hosted 20 Australian Open events, while further south lies the private courses of The Lakes Golf Club and Bonnie Doon Golf Club.

TO THE BEACH

Surfing, swimming or sunbathing? Find a beach to suit. The closest beach to Waterloo also happens to be one of the nation's best. Coogee Beach offers a family-friendly shoreline for paddling and a promenade for a post-swim gelato. Meanwhile, Clovelly Beach offers a small but beautiful spot for swimming and sunbathing. If you're into surfing, then the northern end of Bondi is the place to go. On a beautiful day, why not walk the scenic 6km Bondi to Coogee route and stop off at a relaxed seaside café for lunch?

INNER CITY CULTURE

Waterloo puts you at the heart of Sydney's main action and events. Surry Hills, The Rocks, Sydney Harbour, Green Square, Alexandria, Coogee and Bondi Junction – it's all within easy reach by foot or public transport.



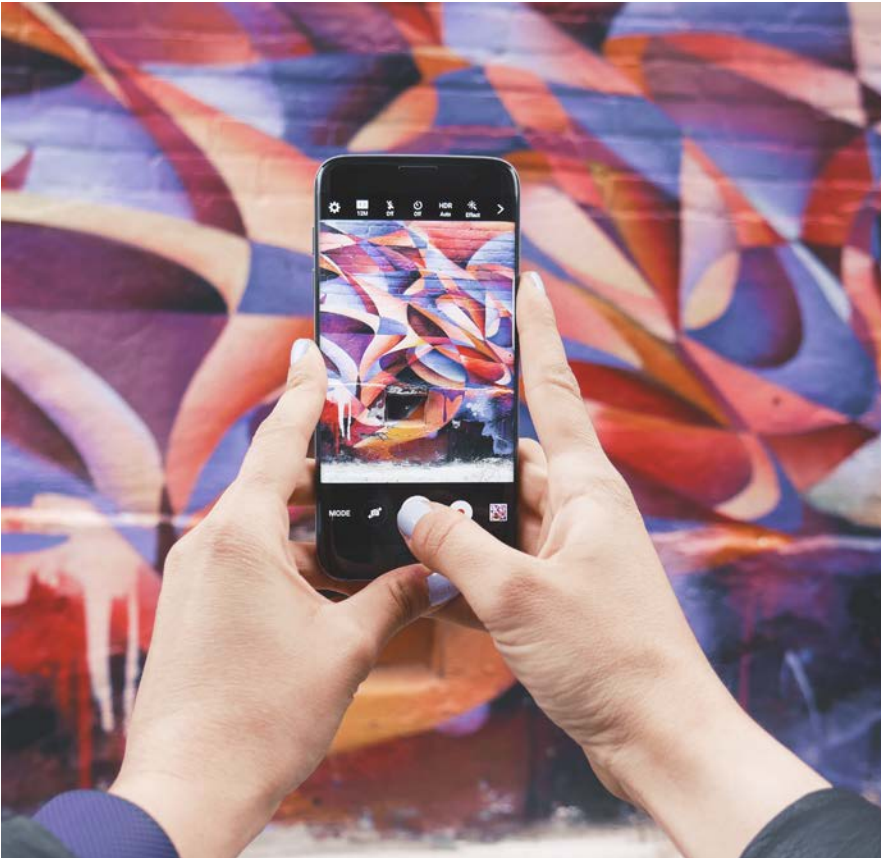
WHAT'S ON IN WATERLOO?

Local events and highlights for adventurous weekends.

Waterloo itself is a hub of diverse cultural and creative energy, with art galleries and performances celebrating both our shared and unique human experiences. The new Green Square precinct offers a state-of-the-art library and open public plaza. There's also so much to look forward to in Dyuralya Square, in the heart of the Lachlan Precinct – which when finished will provide a 2,000 square-metre park including communal space for markets and events.

There's an almost overwhelming selection of retail destinations in and around Waterloo. Amble to East Village Shopping Centre for the essentials, explore over 1,800 square metres of retailers on O'Dea Avenue, and walk an easy half an hour to the eclectic boutiques and bustling stores of Surry Hills.

When you're ready to furnish your new apartment with stylish furniture, linen, lighting and homewares, then Supa Centa Moore Park is minutes away. And when you want to find dapper new threads for that upcoming occasion, then you can take your pick from Westfield shopping centres in Sydney, Bondi Junction or Eastgardens.



MARKETS & PRODUCE

- o **Joynton Park Fresh Food and Artisan Market** for organic produce straight from the farm gate, close to bike paths and public transport.
- o **Sydney Vegan Market** at the Entertainment Quarter in Moore Park, offering vegan goodies every third Sunday of the month.
- o **The Grounds Markets** at the Grounds of Alexandria for fresh bread, pastries and produce every weekend.

FINE ARTS & CREATIVE WORKSHOPS

- o **Utopia Art Sydney**, which showcases diverse and dynamic artworks from Aboriginal and non-Aboriginal artists.
- o **MAY SPACE**, home to a select showing of emerging and established contemporary artists from across Australia.
- o **Sydney Photographic Workshops** where you can take beginner photography courses and advance your pro skills.
- o **Joynton Avenue Creative Centre**, which provides creative studio spaces for rent and is set to include co-working spaces.
- o **Commune**, Sydney's original co-working space for the creative industry that also has a collaborative warehouse space and yoga and pilates by donation.

SPORTS & ENTERTAINMENT

- o **Sydney Cricket Ground** for cricket, AFL, rugby league and rugby union games.
- o **Royal Randwick Racecourse** for Royal Randwick Race Day in February and race events throughout the year.
- o **Redfern Oval** for local Saturday afternoon NSW Premier Rugby League featuring the local team, the South Sydney Rabbitohs.

CINEMAS

- o **The MOV'N BED Cinema** at the Entertainment Quarter Moore Park, the biggest outdoor bed cinema in the world.
- o **Moonlight Cinema** at Centennial Parklands, showing family favourites and new releases under the stars.
- o **HOYTS Entertainment Quarter**, where you can catch the latest blockbusters in modern surroundings.

THEATRES

- o **Belvoir Street Theatre**, the origin of beloved Australian productions such as Cloudstreet and The Drover's Wife.
- o **Seymour Centre** at University of Sydney, home to four theatres and a variety of modern performances.
- o **Oxford Art Factory** where experimental and touring musicians and bands play in energetic live performances.
- o **Hordern Pavilion** in Moore Park is your go-to venue for live music and events.

JUST FOR FUN

- o **Strike Entertainment Quarter** which offers 12 bowling lanes, laser tag, an escape room and private karaoke rooms.
- o **VR Corner** in Chippendale, where you can dive into new interactive worlds via headsets for up to 7 players.
- o **Vive Cooking School** to join a cooking class to suit your style, from Spanish tapas to molecular cuisine.



WHAT THE LOCALS SAY

"I have lived in Waterloo for 20 years and watched a wonderful gentrification, as many highly educated and superbly creative individuals and couples have moved in, to delight in this very popular suburb."

Fast emerging as a stylish address, Waterloo is situated on the edge of the CBD and is truly an inner-city suburb. It has excellent transport connections, with Green Square Station providing residents with direct access to the Sydney CBD and Sydney Airport within a few minutes as well as the southern Sydney region.

The future Waterloo Metro Station represents major government investment in the area and will further improve public transport accessibility including direct access to several stations in the heart of the Sydney CBD such as Barangaroo and Martin Place.

FAST FACTS

5 minutes

TO SYDNEY DOMESTIC AND INTERNATIONAL AIRPORT FROM GREEN SQUARE STATION

5 minutes

TO CENTRAL STATION FROM GREEN SQUARE STATION

97% walkability score

LIFE IN WATERLOO MEANS A CAR IS OPTIONAL. EMPLOYMENT HUBS, SHOPS, RESTAURANTS, DINING AND TRANSPORT ARE ALL LOCATED A SHORT WALK AWAY.

73% transit score

EXTREMELY CLOSE PROXIMITY TO BUS STOPS, TRAIN STATIONS AND THE NEW METRO SYSTEM GIVES WATERLOO AN ENVIABLE TRANSIT SCORE.

5 buses every 5 minutes

WATERLOO IS WELL SERVICED BY A RANGE OF EXPRESS AND LOCAL SERVICES, CONNECTING WATERLOO WITH THE BEACHES, EASTERN SUBURBS, INNER WEST AND CITY.



A FRESH LOOK AT URBAN LIVING

It used to be that Australians dreamed of a white picket fence and a patch of lawn to call their own, but statistics show that this dream is evolving into something far more modern in style. You no longer need a house in the suburbs to have peace, space and harmony.

While there used to be one occupied apartment for every seven houses in 1991, today that ratio looks more like one apartment for every five houses¹. A higher percentage of Australians live in capital cities than ever before (about two in every three people, in fact), leading to a much greater focus on perfecting the urban lifestyle.

So how has this changed city living? In transport options, property design and almost every aspect imaginable. High rise no longer means compromising quality of life – actually, it's the exact opposite.

It makes sense to invest in a modern home that's closer to work, school and entertainment. It's a wonderful thing to be able to combine your short daily commute with a bike ride through Moore Park to connect to the new Sydney Light Rail line, or walking to Green Square Station to be in the city within a matter of minutes. Who needs a car when you're this close to public transport options and career opportunities?

An apartment can also place you significantly closer to dining and entertainment options than a house in the suburbs can. Imagine being able to attend every sporting event, international concert and art gallery launch that catches your interest, or walking from your home to Sydney's hottest new conceptual restaurant. You can easily be front and centre in Sydney Harbour as the fireworks begin on New Year's Eve.

There are the shared facilities of living in a modern precinct that foster an unparalleled lifestyle. On a Tuesday night you might wander up to your building's rooftop pool for a few laps, or to meet friends overlooking the city lights in a lush garden nook. There's no need to clean the pool or mow a lawn, because the city is your space and all that's left to do is relax, enjoy and explore.

Common spaces also provide the opportunity to connect with your wider community. While you'll have peace and solitude when you're at home, you can step out and greet neighbours at the nearby weekend markets at The Lachlan Precinct or the Entertainment Quarter in Moore Park. A modern apartment building may even offer function rooms and co-working spaces, providing the opportunity to work from home in comfort and to network with like-minded professionals.

Combine all of these elements when you live in a contemporary apartment building, and nothing could make more sense for a life well lived. Whether you're buying your next family home or choosing your next investment property, it's wise to keep in mind that a more modern lifestyle offers more. Perhaps the Australian dream is evolving for the better.

¹ Australian Bureau of Statistics, Census of Population and Housing

SIX REASONS TO BUY IN WATERLOO

REASON ONE

FAMILY *Living*

A short commute from Waterloo means more time that you can spend with loved ones, leading to an ideal work-life balance. Meanwhile, the abundance of education options in the area enables everyone to reach their potential. Schools in the neighbourhood include Gardeners Road Public School, Erskineville Public School, Alexandria Park Community School, Sydney Girls High School and Sydney Boys High School. University students have three world-class universities close by with University of New South Wales, University of Sydney and University of Technology Sydney.



REASON TWO

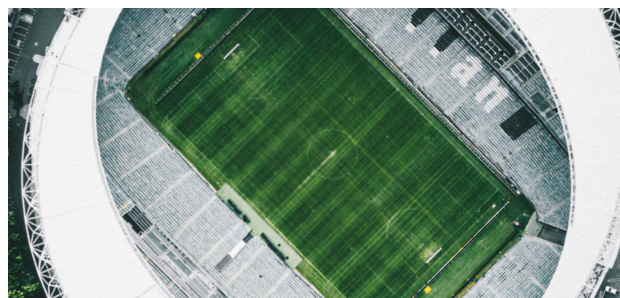
A CONNECTED *Community*

Waterloo connects you with the vibrant local culture as well as Sydney's enormous celebrations. Vivid Sydney, Chinese New Year, Carols in the Domain and City2Surf – you'll be close to it all, while being able to enjoy a neighbourhood that's modern, respectful and multicultural. There's an astonishing range of dining destinations in the area offering a world of flavours, as well as Australia's best boutique shopping and major retail hubs. You can come to know your neighbours through shared experiences and public spaces such as the upcoming Lachlan Precinct and Dyuralya Square.



REASON THREE

NEVER FAR *from Anything*

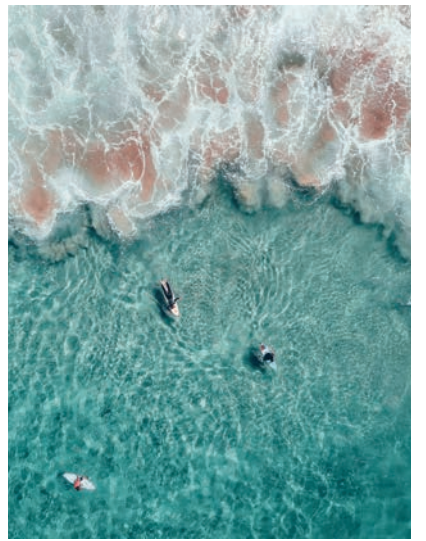


If you're searching for your next investment, consider the Waterloo area with its advantages of connection, community, environment and education.

REASON FOUR

BREATHE *Easy*

Waterloo combines the ideal inner-city lifestyle with Sydney's largest urban green space. Centennial Parklands will provide a lifetime of peaceful moments and open-air fitness, as well as the chance to connect with world-class conservation practises. There are five quality golf courses in the area, both public and private, as well as a range of sports centres and swimming pools. On a weekend you'll have endless options, including lazing over lunch in nearby Moore Park, taking a short journey to beautiful Coogee Beach, shopping up a storm in chic Surry Hills and wandering through markets at nearby Dyuralya Square.



REASON FIVE

VALUE FOR *Money*

True value for your investment means being able to enjoy first-class amenities, easy travel to work and recreation, and peace of mind that you've purchased in an area that's set to grow in demand. Not every inner-city suburb can offer these aspects, but the revitalised area of Waterloo offers the opportunity to own and live in contemporary comfort in an affordable and accessible way. By buying a new property, you'll gain access to brand-new amenities in an area where new and exciting changes are occurring on a daily basis. Waterloo has become a highly desirable suburb for owner-occupiers, investors and tenants alike.



REASON SIX

QUALITY *Design*



The inner-city location and connectivity of Waterloo has naturally piqued the interest of Australia's top builders and developers. Now is the chance to find your very own piece of the neighbourhood's transformation by investing in a luxurious, architect-envisioned property by a reputable developer. Never before has there been such an opportunity to enjoy Waterloo's natural surroundings and proximity to the city, while also living in a cutting-edge apartment with truly modern facilities. Quality design and craftsmanship simply never goes out of style.

YOUR OPPORTUNITY AT MASTERY BY CROWN GROUP



Drawing energy from nature, calm from design, and nourishing health and wellbeing with everyday rituals—a swim, a run, a quiet coffee in the garden. With its highly considered signature amenities, Mastery by Crown Group invites residents to relax, indulge, recharge and live well.

Mastery is Crown Group’s exceptional new precinct in Waterloo, comprising five buildings envisioned by architects Kengo, Koichi Takada and Silvester Fuller.

These buildings are living and breathing entities, drawing elements from the harmony of Japanese design and nature to form a luxurious and contemporary lifestyle within a tranquil urban forest.

Penthouse, studio, 1, 2 and 3 bedroom apartments are now available at 48 O’Dea Avenue; a moment from the shared spaces of the new Lachlan Precinct, minutes from the eateries of Danks Street and under half an hour to Central Station.

Apartments and amenities alike reflect the true luxury you’ve come to expect from Crown Group. Residents gain access to a rooftop infinity pool, state-of-the-art gymnasium and sauna, plant-filled community spaces and a ground-floor Japanese Eat Street precinct with world-class restaurants and retail options.

Register your interest at crowngroup.com.au/mastery today or visit our Display Centre, open 7 days from 10am-4pm. Located at 30 O’Dea Avenue, Waterloo.

VISIT CROWNGROUP.COM.AU/MASTERY OR CALL US ON 1800 895 610

Crown Group is consistently awarded and recognised for excellence in creating state-of-the-art residential communities and commercial centres. From national awards in concept planning to recognition for pioneering innovation from the highest industry bodies, Crown Group’s accolades demonstrate a proven track record in delivering superb outcomes. Crown Group creates intelligent, large-scale urban developments that respond to the resurgent demand for city living.



Disclaimer: The information, images and illustrations in this brochure are indicative only and are subject to change. Crown W48 Pty Limited and companies related to it and its agents do not warrant the accuracy of the information, images or illustrations and do not accept any liability for any error or discrepancy in the content of this brochure. The information, images and illustrations displayed in this brochure will not form part of any contract for sale. Interested parties must rely on their own enquiries and the information in the contract for sale for the development. All images depicting the buildings in Mastery are computer generated images based on the proposed designs for the buildings. The appearance of the completed buildings will reflect the final designs approved under the development approvals in due course, and therefore may differ from the images in this document. In particular, the bulk and form of buildings may be different, wall areas depicted in glass may be solid walls and wall finishes may be in different colours and materials to those depicted in the images in this brochure, other marketing material and in the display suite.